



Stifrol™ – New Generation of Roller Guides

Rexnord introduces a new generation of Marbett® Roller Guides for package handling with superior stiffness, low-friction, and low noise capabilities. With patented designs for cost effective installation that simplifies conveyor construction and cost.

Marbett® Stifrol™ Roller Guides convey any package from light-duty containers and shrink-wrapped packages to heavy-duty cardboard packages.

Today's high speed conveying demand require the next generation Marbett® Stifrol™ Roller Guides to deliver superior product handling capabilities, while more and more delicate packages are being conveyed.

Maximize Stability

The new ultra-stiff Marbett® Stifrol™ Roller Guides work in combination with the conveyor structure to provide superior stability even when under heavy load or with high speed conveying.

Superior Product Handling

Convey your product with the smooth interaction of the low friction, low noise Marbett® Stifrol™ Roller Guides to significantly improve product handling, while product damage and discards are prevented.

Simple, Less Costly Conveyor Construction

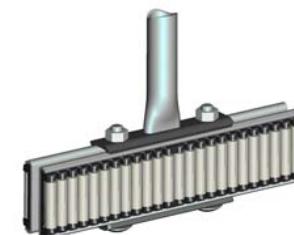
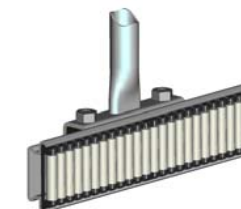
A simple, cost effective installation simplifies conveyor construction and cost by reducing the number of supports needed. With the Marbett® Stifrol™ Roller Guides only half the supports are needed spaced over the conveyor length of 1.5 m or more.

Increased Productivity

With Marbett® Stifrol™ Roller Guide's patented installation concept, the rapid, easy-to-assemble roller guide conveyor kit maximizes fast, high quality conveyor construction and set up at the lowest costs.

FEATURES & BENEFITS

- Ideal for dry end – package handling applications
- Superior performances at high speeds with heavy packages
- Side and Center Usage by the same parts = standardization
- Stiff Version for maximum performances
- Compact version for machine space reduction
- Superior Product Handling by gentle product contact
- Roller reduced diameter and pitch = low noise
- Superior Stiffness
- Guide and Pillars work as a unique part
- Halves the amount of supports needed
- Maintains stable shape and full product support for enhanced product handling
- Easy and Quick installation
- Pre-assembly feature enables a secure and precise installation
- Complete set of accessories for installation and set up
- Low Noise
- Safe product designed according to the European safety regulations, avoiding holes and traps



WORLDWIDE CUSTOMER SERVICE

AUSTRALIA
Rexnord Australia Pty. Ltd.
Picton, New South Wales
Phone: 61-2-4677-3811
Fax: 61-2-4677-3812

BRAZIL
Rexnord Correntes Ltda.
Sao Leopoldo - RS
Phone: 55-51-579-8022
Fax: 55-51-579-8029

CANADA
Rexnord Canada Ltd.
Scarborough, Ontario
Phone: 1-416-297-6868
Fax: 1-416-297-6873

CHINA
Rexnord China
Shanghai
Phone: 86-21-62701942
Fax: 86-21-62701943

FLATTOP EUROPE
Rexnord FlatTop Europe
b.v.
's-Gravanzande, The
Netherlands
Phone: 31-174-445-111
Fax: 31-174-445-222

Rexnord Marbett S.r.l.
Correggio (RE), Italy
Phone: 39-0522-639333
Fax: 39-0522-637778

RMCC Deutschland Kette
GmbH
Aßlar-Werdorf, Germany
Phone: 49-6443-83140
Fax: 49-6443-831420

Rexnord FlatTop France
Only Cedex, France
Phone: 33-1-4173-4220
Fax: 33-1-4173-4229

UNITED STATES
Customer Service
Phone: 1-866-REXNORD
1-866-739-6673
Fax: 1-614-675-1898
rexnordcs(state)@rexnord.com
Example:
rexnordcssohio@rexnord.com

Rexnord FlatTop North America
Grafton, Wisconsin
Phone: 1-262-376-4700
Fax: 1-262-376-4720

Rexnord International - Power
Transmission
Milwaukee, Wisconsin
Phone: 1-414-643-2366
Fax: 1-414-643-3222
international2@rexnord.com

ALL COUNTRIES NOT LISTED
Rexnord FlatTop Europe
b.v.
's-Gravanzande,
The Netherlands
Phone: 31-174-445-111
Fax: 31-174-445-222

After Hours/Emergency Phone:
31-174-445-112

Rex nord Total Solutions for Package Conveying



New Cross Clamp 786

New Split concept for easy installation-uninstallation with significant time and cost savings; effective horizontal and vertical quick set up capabilities



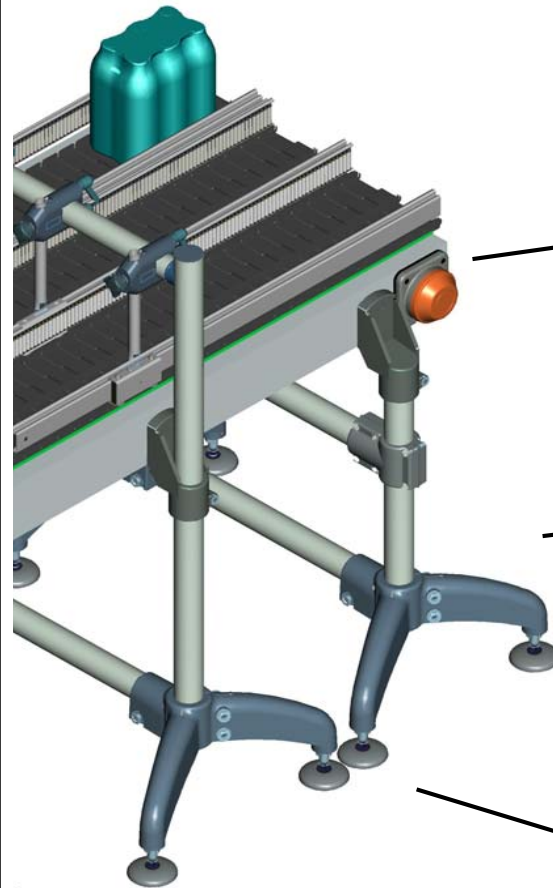
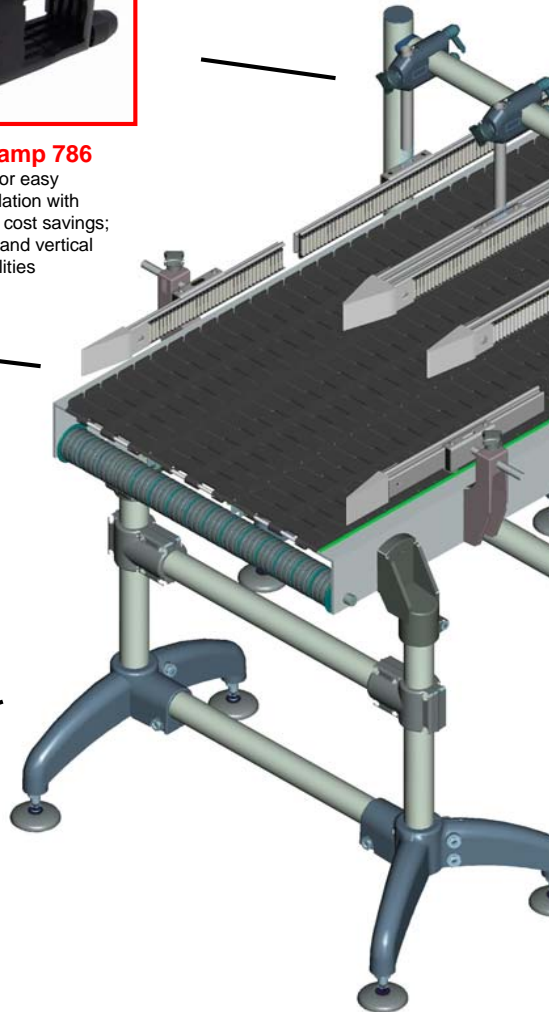
New Stifrol™ Roller Guide

A breakthrough new generation roller guide installable in few quick steps, with exceptional stiffness for a lower cost conveyor structure and optimal product handling: the smoothest interaction to any delicate to heavy duty package.



Rexnord® and MCC® LBP Chains

Wide Range of LBP Chains available, as the suitable solution in combination with the Stifrol™ to convey packs with the minimum backline pressure and no damage



Marbett® MB Bearings

Superior performances = no downtimes, lubricated for life versions eliminate maintenance need; also, an appealing opportunity to promote your company brand by the logo customization.



Marbett® Conveyor Components

Extended chain life, reduced maintenance and downtimes, energy savings by the premium low friction chain guide - return solutions. Conveyor cost reduced and quality maximized by the fast conveyor construction modular concept enabled by the Marbett® components

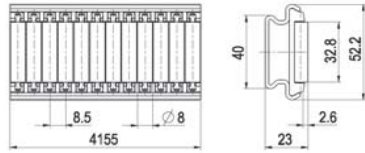


Marbett® Levellers

Complete range of Premium quality and high load levellers for conveyors and machine, the second appealing opportunity to promote your company brand by the logo customization.

Part 798

Roller Guide Stiff Version

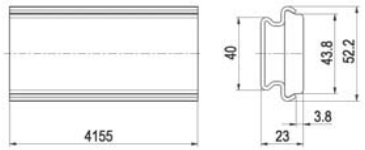


Part	Profile Material	Pin Material	Code	Weight Kg/m
798	AISI430	AISI430	S0798625433	1.84
	AISI304	AISI304	S0798625443	1.84

- Roller Module Frame Material: POM (Black)
- Rollers Material: PE (White)
- Standard packaging : 4.155 meter strands.
- Packaging : 8.3 meter (n° 2 strands).

Part 799

Guiderail Stiff Version



Part	Profile Material	Code	Weight Kg/m
799	AISI430	S0799625453	1.50
	AISI304	S0799625463	1.50

- Profile Material: HDPE (White)
- Standard packaging : 4.155 meter strands.
- Packaging : 8.2 meter (n° 2 strands).

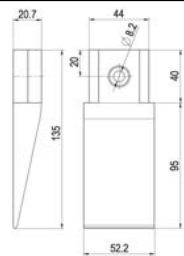
Part 801

Divider - Side



Code	Weight Kg
S0801625473	0.10

- Material: PA (White)
- Packaging : n 2 Pieces



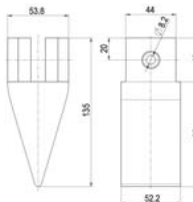
Part 809

Divider - Center

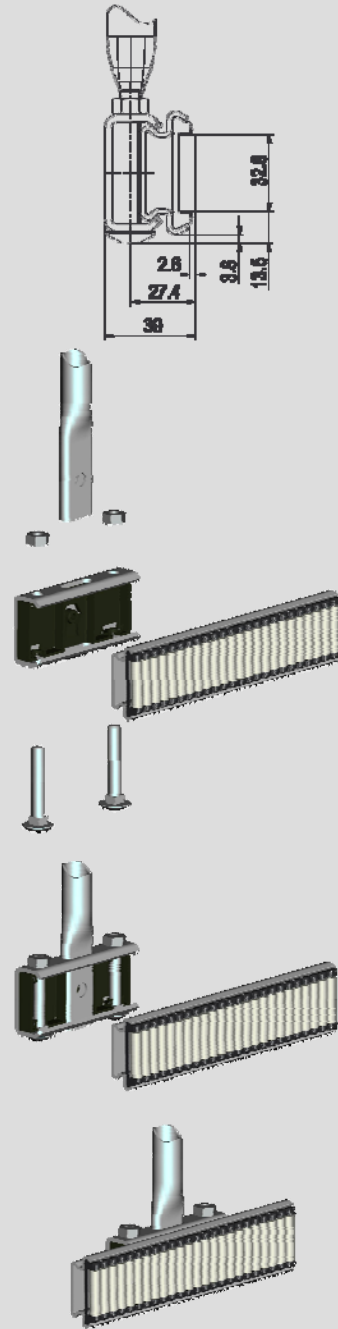


Code	Weight Kg
S0809625843	0.24

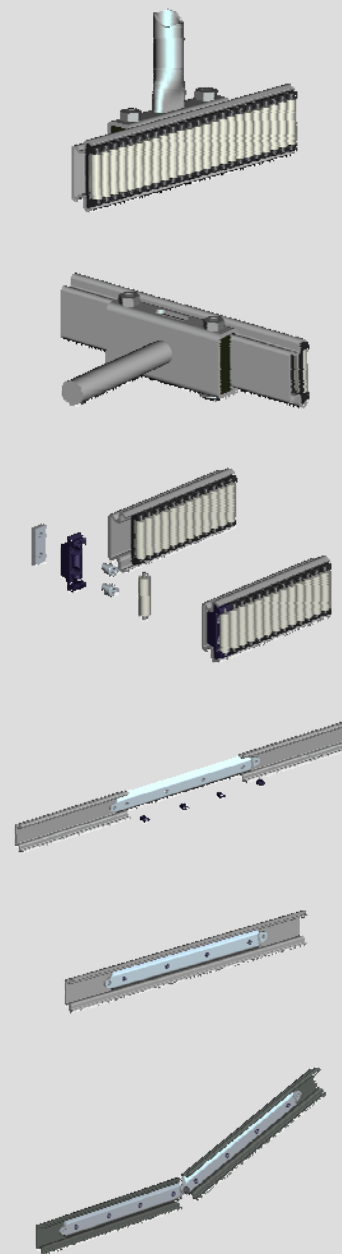
- Material: PA (White)
- Packaging : n 2 Pieces



Installation – Side Usage

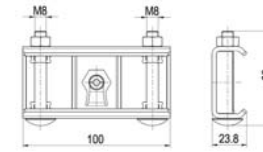


Installation



Side Clamp (for Stiff Version)

Part 794



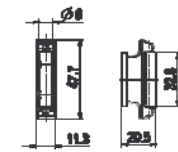
Part	Metal Body	Code	Weight Kg
794	AISI430	S0794625363	0.28
	AISI304	S0794625373	0.28

- Plastic Insert Material: POM (Black)
- Hardware: Stainless Steel
- Packaging : n 12 Pieces



End Closure (for Stiff Version)

Part 792



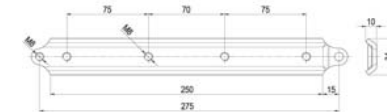
Part	Material	Code	Weight Kg
792	AISI304	S0792625383	0.02

- Hardware: Stainless Steel AISI304
- Packaging : n 24 Pieces



Junction (for stiff Version)

Part 793



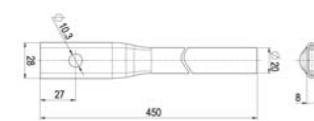
Part	Material	Code	Weight Kg
793	AISI430	S0793625393	0.32
	AISI304	S0793625403	0.32

- Hardware: Stainless Steel
- Packaging : n 12 Pieces



Pillar

Part 795

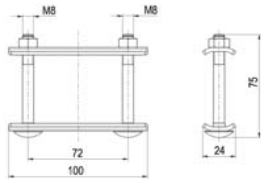


Part	Material	Code	Weight Kg
795	AISI430	S0795625413	0.30
	AISI304	S0795625423	0.30

- Packaging : n 12 Pieces



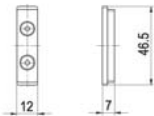
Part 807 ▪ Center Clamp (Compact Junction)



Part	Material	Code	Weight Kg
807	AISI430	S0807625533	0.15
	AISI304	S0807625543	0.15

- Hardware: Stainless Steel
- Packaging : n 12 Pieces

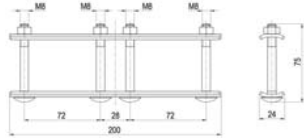
Part 808 ▪ End Closure (for Compact Version)



Part	Material	Code	Weight Kg
808	AISI304	S0808625553	0.03

- Hardware: Stainless Steel
- Packaging : n 24 Pieces

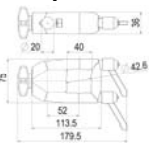
Part 811 ▪ Junction (for Compact Version)



Part	Material	Code	Weight Kg
811	AISI430	S0811626183	0.30
	AISI304	S0811626193	0.30

- Hardware: Stainless Steel
- Packaging : n 12 Pieces

Part 786 ▪ Cross Clamp

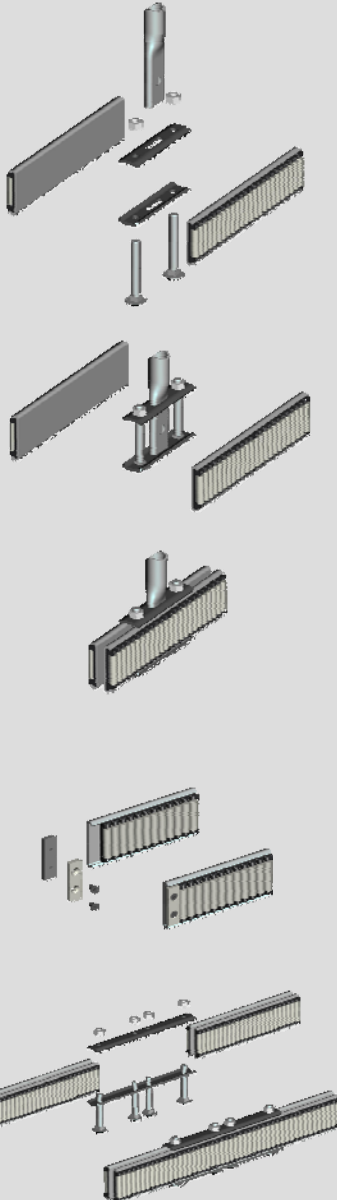


Max recommended tightening torque : 2 Kgm.

Part	Version	Code	Weight Kg
786	With Nut	S0786618393	0.30
	With handles and Knob	S0786622423	0.30

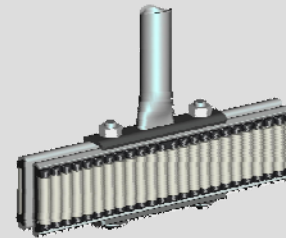
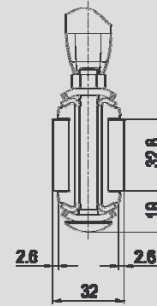
- Clamp in PA FV (black), Screws in stainless steel, nuts in nickel plated brass.
- Packaging : 25 pieces.

• Installation

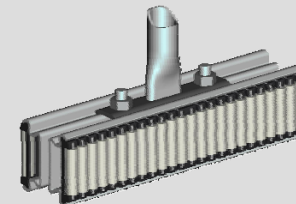
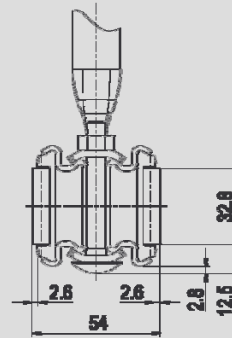


Standard
Made To Order

• Compact Center

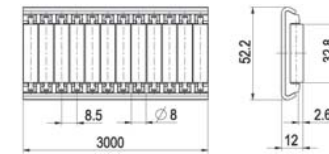


• Stiff - Center Usage



Note: for center usage x2 quantities must be purchased (e.g. for a 4 m long conveyor using Part. 803, 8 m are required)

▪ Roller Guide Center Compact Version



Part	Profile Material	Pin Material	Code	Weight Kg/m
803	AISI430	AISI430	S0803625483	1.54
	AISI304	AISI304	S0803625493	1.54

- Roller Module Frame Material: POM (Black)
- Rollers Material: PE (White)
- Standard packaging : 3 meter strands.
- Packaging : 6 meter (n° 2 strands).

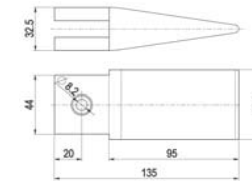
▪ Guiderail Compact Version



Part	Profile Material	Code	Weight Kg/m
804	AISI430	S0804625503	1.20
	AISI304	S0804625513	1.20

- Profile Material: HDPE (White)
- Standard packaging : 3 meter strands.
- Packaging : 6 meter (n° 2 strands).

▪ Divider - Center



Part	Material	Code	Weight Kg/m
810	PA	S0810625853	0.16

- Material: PA (White)
- Packaging : n 2 Pieces